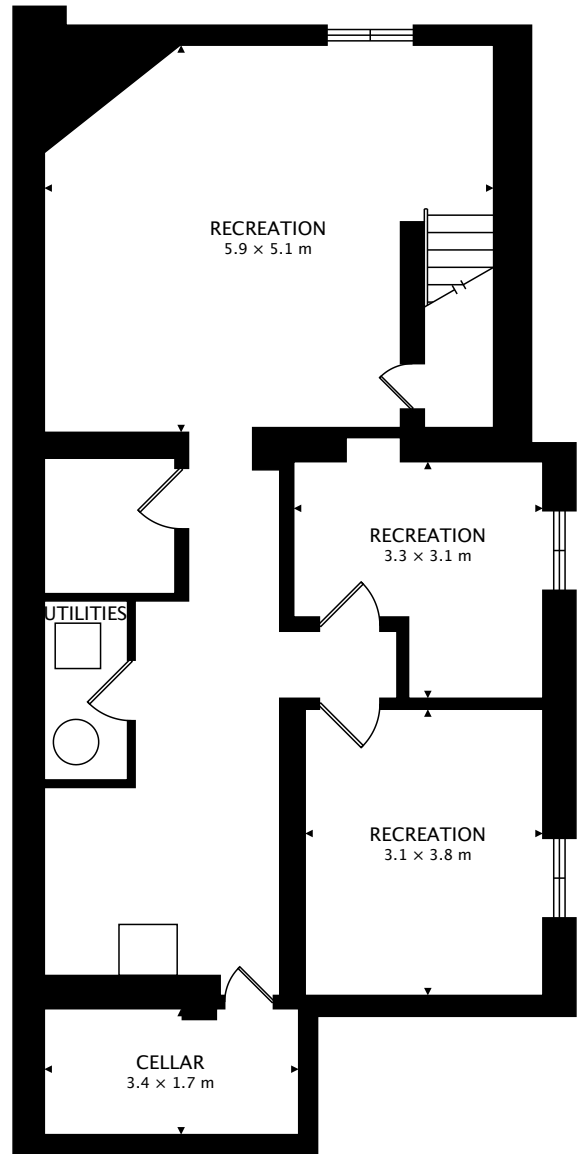


MAIN
94.4 m²



LOWER
97.7 m² BELOW GRADE

TOTAL
94.4 m² + 97.7 m² BELOW GRADE



CAPTURED ON: 18 SEP 2017
DIMENSIONS, AREAS, LAYOUTS AND DETAILS ARE APPROXIMATE
AND SHOULD BE CONSIDERED ILLUSTRATIVE ONLY.